



H81 Control - Series 5000

The H81 Series of resistance weld control is a modular MFDC Inverter control system that exhibits the same degree of reliability and dependability that customers have seen with previous models of Weltronic controls. The H81 provides both ease of use and ensures quality, repeatable welds. The H81 is available with various sizes of inverter modules. The H81-10000 uses a 400 amp inverter and the H81-30000 uses a 1000 amp inverter, each rated at 10% duty cycle. A larger 2000 amp inverter is also available if required.



The H81 - 10000 robot weld control shown here is protected in a rugged enclosure. All connection points for I/O and Ethernet ports are conveniently located on the top of the cabinet.

Key Features

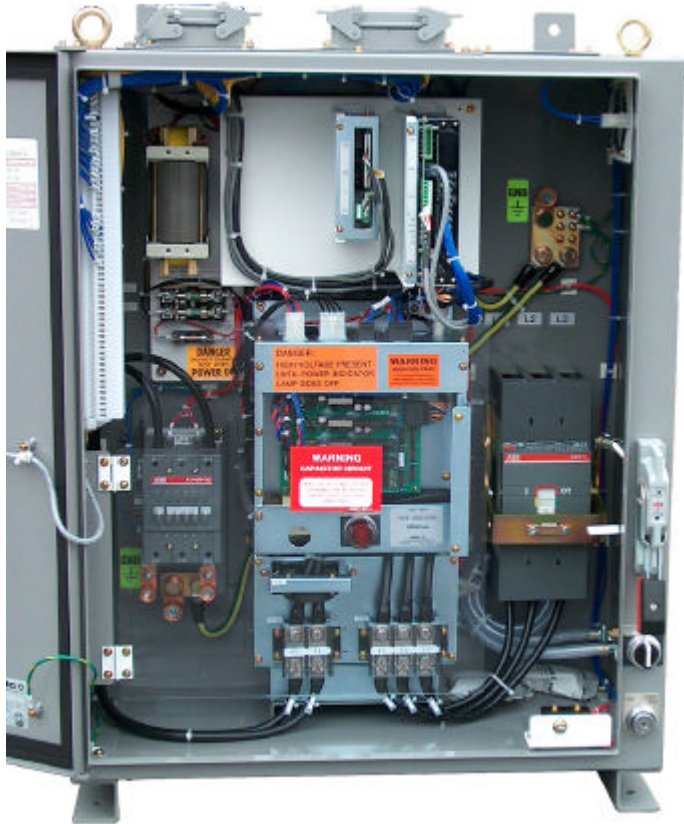
- I-Available monitoring- useful in monitoring weld tool deterioration and current shunting
- 99 Weld Schedules in Fixed Format
- 2 Dedicated Schedules for Auto Tip Dress
- Automatic Voltage Compensation & Constant Current selectable for each current pulse
- Network Ready for WTC Ethernet based Weld Monitoring System for Data Collection, Data Certification, Parameters Backup and Restore
- Optional Secondary Current Monitoring
- Optional Constant Heat Control Support Hardware
- Optional Binary Pressure Control Devices

H81 - Series 5000 FRS Welding Control System

MFDC Control

Standard Features

- Harting Connectors
- Ethernet Connectors
- Remote LED I/O Diagnostic Displays
- Circuit Breaker and Isolation Contactors
- Inverter (various sizes available)



Models

- Robot Welding
 - RS485 Serial Interface with 24 Bits I/O
 - Robot to real world I/O conversion
 - Models H81-10000 & H81-30000
- Automatic Machine Welding
 - Allen-Bradley RIO Interface
 - 32 Bits (16In, 16Out Complimentary)
 - Harting Connector for all external connections
- Manually Operated Transguns
 - DIO (24VDC In, 24VDC Out)
 - Ground Fault Safety Control
 - Model H81-10002

Options

- Secondary Current Monitoring
- Constant Heat Control
- Binary Pressure Devices
- Bank Workstation Weld Monitor Software

The H81-10000 Control shown here is modular and lends to a clean layout. Connectors on the top of the enclosure make it possible for the user to make complete hookups without having to add control wiring within the cabinet. All you need to do is to hook up the 480 Volt power lines to the top of the circuit breaker and to connect the welding transformers at the bottom of the unit.

The entire range of automotive welding requirements can be achieved with the use of the H81-10000 or the H81-30000 models. For more information and ratings of these models plus that of the 2000 amp inverter, please contact WTC's sales support department.

Reliability & Dependability
remain part of its standard features

| Model | H81-10002 | H81 - 10000 | H81 - 30000 |
|---------------------------|--|--|---|
| Approximate Weight | 205 lbs 92 Kg | 200 lbs 90 Kg | 345 lbs 155 Kg |
| Dimensions H x W x D | 34.65 x 33.07 x 14.21 (in) 880 x 840 x 361 (mm) | 34.65 x 33.07 x 14.21 (in) 880 x 840 x 361 (mm) | 43.31 x 33.07 x 16.18 (in) 1100 x 840 x 411 (mm) |
| Mounting Centers W x H | 18.50 x 33.07 (in) 470 x 840 (mm) | 18.50 x 33.07 (in) 470 x 840 (mm) | 18.50 x 41.73 (in) 470 x 1060 (mm) |
| Mounting Holes Diameter | 0.55 (in) 14 (mm) | 0.55 (in) 14 (mm) | 0.55 (in) 14 (mm) |



Welding Controls Group

24775 Crestview Court, Farmington Hills, MI USA 48335
Tel: +1 (248) 477-3900 FAX: +1 (248) 477-8897

Email: sales@weldtechcorp.com
Web: <http://www.weldtechcorp.com>

