



U81 Control - Series 5000

The U81 Series of resistance weld control is a modular control system that exhibits the same degree of reliability and dependability that customers have seen with previous models of Weltronic controls. The U81 provides both ease of use and ensures quality, repeatable welds. Its flexibility allows for various packaging configurations from single gun to multi-gun welders.



The U81 dual robot weld control shown here is protected in a rugged enclosure. All connection points for I/O and Ethernet ports are conveniently located on the top of the cabinet.

Key Features

- I-Available monitoring- useful in monitoring weld tool deterioration and current shunting
- 99 Weld Schedules in Fixed Format
- 2 Dedicated Schedules for Auto Tip Dress
- Automatic Voltage Compensation & Constant Current selectable for each current pulse
- Network Ready for WTC Ethernet based Weld Monitoring System for Data Collection, Data Certification, Parameters Backup and Restore
- Optional Secondary Current Monitoring
- Optional Constant Heat Control Support Hardware
- Optional Binary Pressure Control Devices

U81 - Series 5000 FRS Welding Control System

AC Control

Standard Features

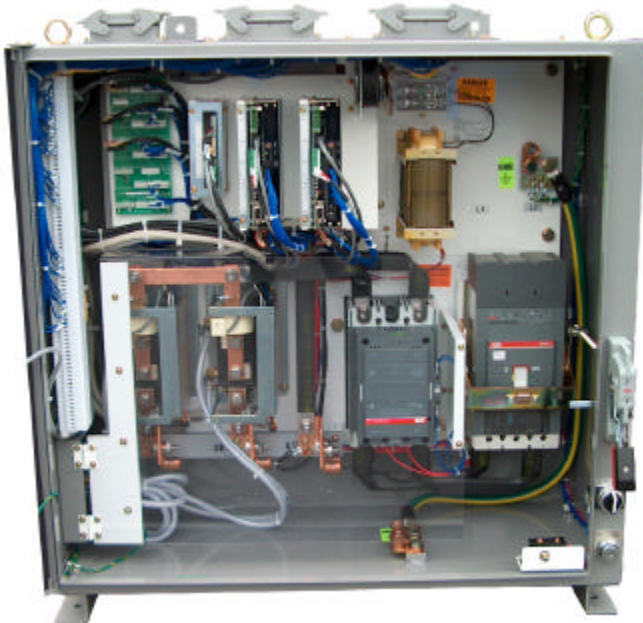
- Harting Connectors
- Ethernet Connectors
- Remote LED I/O Diagnostic Displays
- Circuit Breaker and Isolation Contactors
- SCRs with Isolated Water Cooling Manifolds

Options

- Secondary Current Monitoring
- Constant Heat Control
- Binary Pressure Devices
- Bank Host Weld Monitor Software

Models

- Robot Welding
RS485 Serial Interface with 24 Bits I/O
Robot to real world I/O conversion
- Portable Transgun Welding
DIO Interface (24VDC In, 24 VDC Out)
Multiple Safety Circuits and Fault Diagnostics
Under Voltage Trip Circuit Breaker
Door Mounted Test Features with Diagnostics
- Automatic Machine Welding
Allen-Bradley RIO Interface
32 Bits (16 In, 16 Out Complimentary) per timer
Harting Connector for all external connections
Same enclosure for Single / Dual - ease of conversion
Same enclosure for 3 through 6-Pac- ease of conversion



Reliability & Dependability remain part of its standard features

The U81 Control is modular which lends to a clean layout. Connectors on the top of the enclosure make it possible for the user to make complete hookups without having to add control wiring within the cabinet. All you need to do is to hook up the 480 Volt power lines to the top of the circuit breaker and to connect the welding transformers at the bottom of the unit.

Enclosure Types	Portable Transgun	Single Robot	Dual Robot or Single/Dual Machine	Multi-Pac Machine
Approximate Weight	200 lbs 90 Kg	177 lbs 80 Kg	244 lbs 110 Kg	653 lbs 295 kG
Dimensions H x W x D	34.65 x 25.59 x 14.21 (in) 880 x 650 x 361 (mm)	34.65 x 25.59 x 14.21 (in) 880 x 650 x 361 (mm)	34.65 x 33.10 x 14.21 (in) 880 x 841 x 361 (mm)	65.00 x 37.58 x 17.08 (in) 1651 x 955 x 434 (mm)
Mounting Centers W x H	18.50 x 33.07 (in) 470 x 840 (mm)	18.50 x 33.07 (in) 470 x 840 (mm)	18.50 x 33.07 (in) 470 x 840 (mm)	Floor Mount
Mouting Holes Diameter	0.55 (in) 14 (mm)	0.55 (in) 14 (mm)	0.55 (in) 14 (mm)	Floor Mount



Welding Controls Group

24775 Crestview Court, Farmington Hills, MI USA 48335
Tel: +1 (248) 477-3900 FAX: +1 (248) 477-8897

Email: sales@weldtechcorp.com
Web: <http://www.weldtechcorp.com>

